

# Alaska Department of Fish and Game

Habitat Section  
Southeast Region



## 114-33-10230 Tributary 5

## ADDITION

**Water body name:**

**Survey date:** 6/5/2022

**Quad:** Juneau A-6

**Species & Lifestage:**

**Upper Reach Latitude:** 58.079203 **Longitude:** -135.825637

**Survey crew:** DK, JL, FC, RR

**Lower Reach Latitude:** 58.079579 **Longitude:** -135.829780

**Findings:** We surveyed this uncataloged stream using baited minnow traps and GPS and captured juvenile coho salmon. The tributary stream flows through a broad channel dominated by sandy sediment, passing under a bridge (Table 1; Figures 1–3).

**Recommendations:** Add this uncataloged stream to the anadromous waters catalog for rearing coho salmon (Figure 4).

**Nomination:** Pending

Table 1.—114-33-10230 tributary 5 survey data.

Waypoint	Latitude	Longitude	Notes	Stream Width ft	Stream Substrate	Habitat Features	Gradient %	Sample Effort	Sample Results
444	58.079407	-135.826041	Bridge over slow-flowing stream. Coho captured 100' upstream. Stream continues with fish upstream.	12-15	Sand		0-1	MT	25 CO



Figure 1.—Juvenile coho salmon captured at waypoint 444.



Figure 2.—Channel at waypoint 444.



Figure 3.—Bridge surface at waypoint 444.



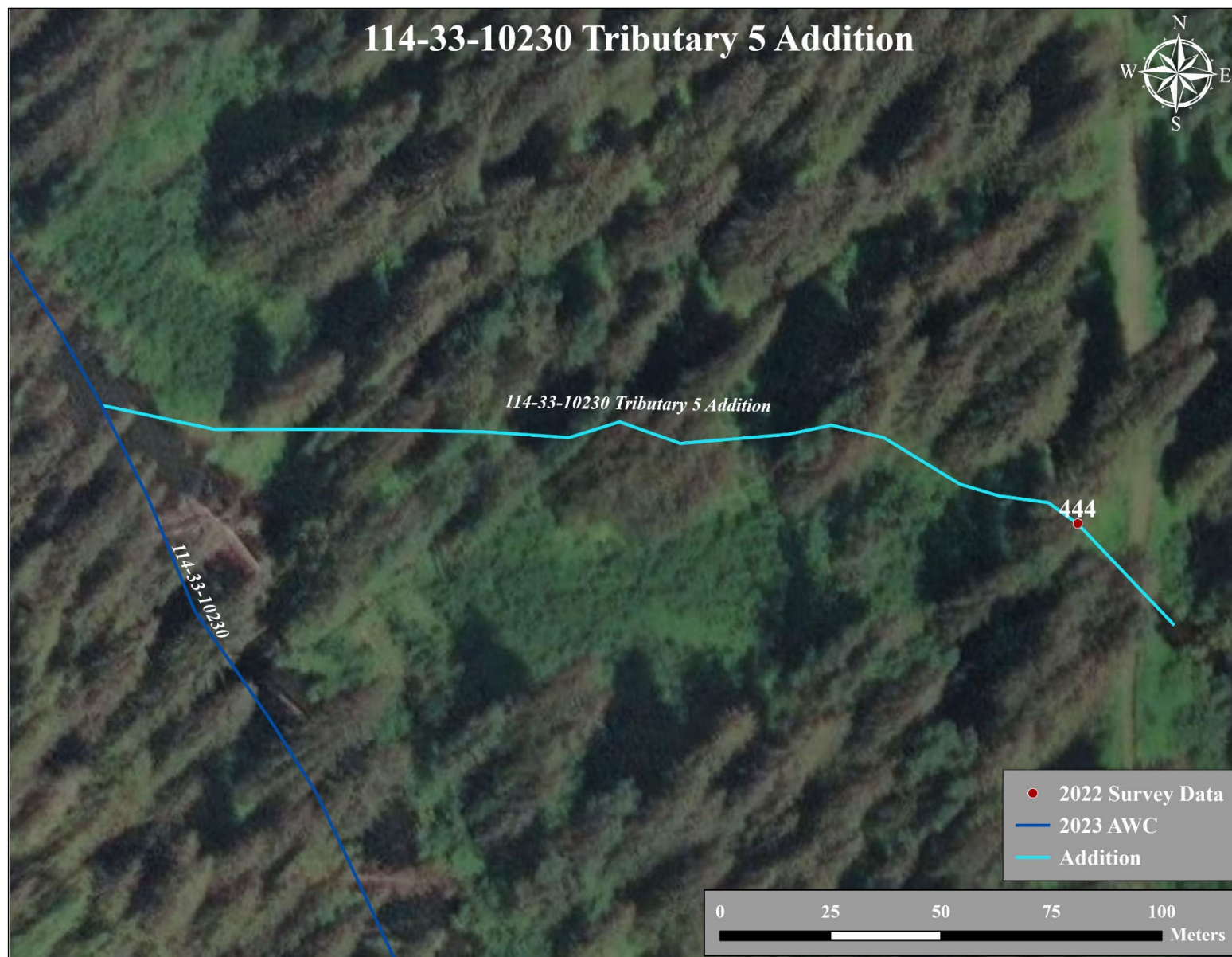


Figure 4.–114-33-10230 tributary 5 addition map.